

# Welcome to Science 10F

## COURSE DETAILS

Course Code: 0120  
Course Name: Science 10F  
Credit Value: 1.0  
Prerequisite: none

## CONTACT INFORMATION

Room 14 McCreary School  
MS Teams: Gr 9 Science  
Email: jlockhart@trsd.ca  
School phone: 835-2083

## COURSE TECHNOLOGY

Office 365  
MS Teams: Gr 9 Science

## COURSE TEXTBOOK

Science Power 9

## SUPPLIES

- 3" – 3 ring binder
- Loose leaf
- Ruler
- Pens, Pencils, Erasers
- Highlighters

## GOALS OF SCIENCE EDUCATION

Goals of science education are:

- Encourage students at all grades to develop a critical sense of wonder and curiosity about scientific and technological endeavours.
- Enable students to use science and technology to acquire new knowledge and solve problems, so they may improve the quality of their own lives and the lives of others.
- Prepare students to critically address science-related societal, economic, ethical and environmental issues.
- Provide students with a proficiency in science that creates opportunities for them to pursue progressively higher levels of study, prepares them for science-related occupations, and engages them in science-related hobbies appropriate to their interests and abilities.
- Develop in students' knowledge of the wide variety of careers related to science, technology, and the environment.

### Unit 1: Atoms and Elements

- The model of the atom
- Chemical symbols
- Common elements and compounds
- Physical properties of matter
- Chemical properties of matter

### Unit 2: Reproduction

- Cell division (mitosis and meiosis)
- Sexual and asexual reproduction
- The human reproductive systems
- Stages of human development
- Introduction to genetics

### Unit 3: The Nature of Electricity

- The particle model of electricity
- Electrostatic phenomena
- Electrical energy
- Sources of electricity

### Unit 4: Exploration of the Universe

- The origin of the universe
- Parts of the solar system
- Space exploration
- Recent advancements in technology

## RULES & EXPECTATIONS

### ➤ Be Proactive

If you need help, ask for it. The best time to ask for help is in the moment that you get stuck, but if you're too shy to ask in class we can meet at lunch, after school or via Teams.

### ➤ Technology in the Classroom

Technology will be an integral part of the functionality of the classroom. Students will have access to the school laptops, but are also encouraged to bring their own device. Improper use may result in a loss of certain privileges.

### ➤ Homework

You won't have homework every night, but when it is assigned it is expected to be completed on time. In order to get the greatest benefit from scheduled direct instruction, students need to be prepared, which means having assigned work completed and all materials with them in the classroom.

### ➤ Incomplete and Late Work

Work is to be completed on time and to the best of the student's ability. Late or missing assignments will be penalized as outlined in the school student handbook, "Upon teacher discretion a maximum of 5% may be deducted for every day the assignment is not turned in. If the assignment is not turned in after two weeks or at the start of a new unit, the assignment will receive a mark of zero."

### ➤ Re-writes for Test and Quizzes

Re-writes will not be available once a summative assessment has been graded and returned to students. If a student is unhappy with their grade they may meet with the teacher to discuss the possibility of completing an alternative assessment. The final decision is at the discretion of the teacher.

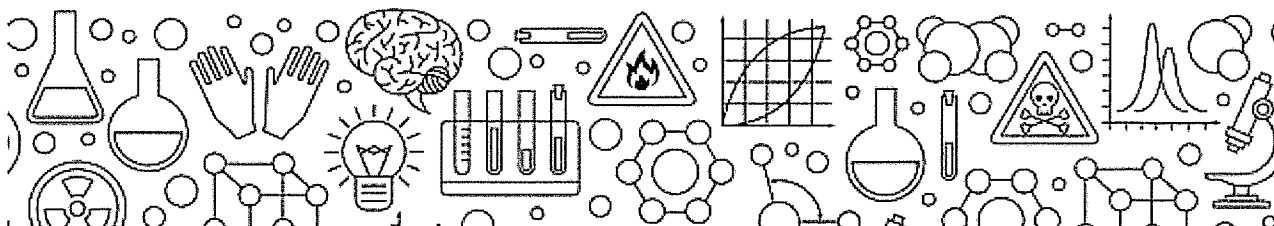
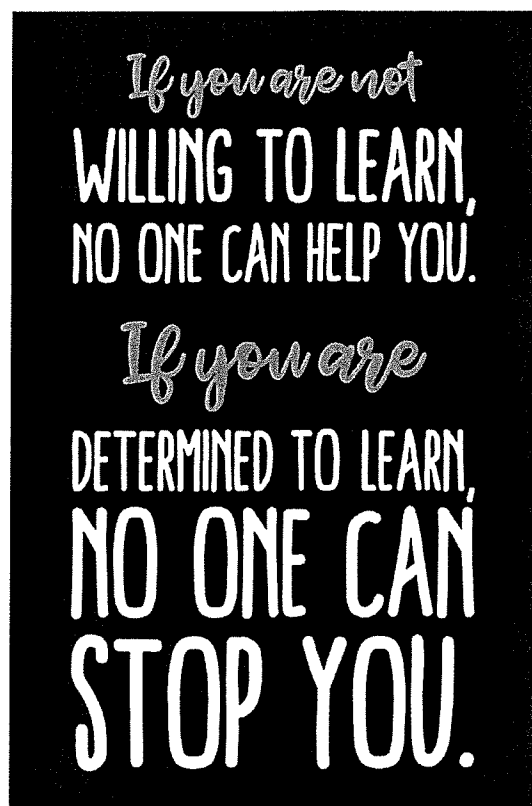
### ➤ Academic Dishonesty

Academic dishonesty including (but not limited to) inappropriate collaboration, cheating, or plagiarism is a severe offence and will be dealt with according to the policy outlined in the school handbook.

### ➤ Student Lates & Absences

Students who are late for class are asked to come in quietly without causing a disruption. Students who make a habit out of being late may not be allowed into the room if class has already begun.

If you are absent, YOU are responsible for finding out what you missed and making up all missed work. If you have an excused absence for the day of a test, please make arrangements to write it the day you return to school. If you skip a lab, test or quiz you will receive a zero.



## BEHAVIOURAL ASSESSMENT

Student behaviour will be evaluated on an ongoing basis using the criteria listed below:

- ✓ Personal Management: organized, productive, independent, persistent, strong work ethic
- ✓ Active Participation in Learning: asks questions, takes initiative, self-assesses, uses feedback
- ✓ Social Responsibility: welcoming and positive, respects rules, routines and others, sets goals

## FORMATIVE ASSESSMENT

Students are encouraged to self-assess their work and level of understanding daily and ensure the answers in their notes are correct, so that they have accurate information to review from for quizzes and tests. Although practice assignments are not immediately recorded for marks they will certainly have an impact on the student's overall grade.

## SUMMATIVE ASSESSMENT

Topic	Item	Weight	Weight
<b>Atoms and Elements</b>	Quiz: Atomic Structure & Bohr Diagrams	15%	<b>20%</b>
	Activity: Physical & Chemical Properties & Changes	15%	
	Quiz: Patterns in the Periodic Table	15%	
	Project: Element Cube – Research Report	15%	
	Project: Element Cube – Finished Cube	10%	
	Test	30%	
<b>Reproduction</b>	Quiz: Mitosis & Meiosis	15%	<b>20%</b>
	Assignment: Asexual & Sexual Reproduction	10%	
	Anatomy Worksheets	15%	
	Activity: Rebops	15%	
	Quiz: Genetics	15%	
	Test	30%	
<b>Electricity</b>	Activity: Electrophorus	15%	<b>20%</b>
	Quiz: Electrostatics	15%	
	Circuit Diagrams Worksheet	12%	
	Current Electricity Worksheet	13%	
	Quiz: Current Electricity	15%	
	Test	30%	
<b>Exploring the Universe</b>	Quiz: Celestial Motion	15%	<b>20%</b>
	Origins of the Universe Video Notes	10%	
	Project: Planetary Real Estate Ad	15%	
	Assignment: Space Technology	15%	
	Word Search Worksheet	15%	
	Test	30%	
<b>Final Exam</b>	All students will write the final exam in June.	100%	<b>20%</b>

**ONCE YOU HAVE READ THROUGH THIS COURSE OUTLINE WITH YOUR CHILD PLEASE SIGN  
AND RETURN IT TO THE SCHOOL.**